



# J/80 NORTH AMERICAN CHAMPIONSHIP

September 10-14, 2014

Annapolis, MD USA

Hosted by Annapolis Yacht Club and J/80 Fleet 10

The Organizing Authority is the Annapolis Yacht Club and the International J/80 Class Association (OA)



## NOTICE OF RACE

### 1 RULES

- 1.1 The regatta will be governed by the rules as defined in *The Racing Rules of Sailing* (RRS).
- 1.2 The regatta is a "Member" event in accordance with J/80 Class Rule (CR) C.3.
- 1.3 No US Sailing prescriptions will apply except:
  - (a) RRS/US 61.4
  - (b) the prescriptions to RRS 67 and 76.1
  - (c) RRS/US Appendix R
  - (d) RRS/US Appendix T Section A, B and DThe full text of these prescriptions is contained in Addendum 1 of this notice of race.
- 1.4 RRS 35 will be changed to provide that boats not finishing within 20 minutes after the first boat to finish will be scored points equal to the last finisher plus 2 without a hearing.
- 1.5 RRS 62.2 and 66 will be changed to shorten the time on the last day of racing for requesting redress and for requesting that a hearing be re-opened.
- 1.6 RRS 63.7 will be replaced by: "If there is a conflict between a rule in the notice of race and one in the sailing instructions, the sailing instructions shall apply."
- 1.7 For boats chartered or loaned for this event, RRS G3 concerning national letters and sail numbers will apply.

**2 ADVERTISING** - Boats may be required to display advertising chosen and supplied by the OA.

### 3 ELIGIBILITY AND ENTRY

- 3.1 The regatta is open only to J/80 class boats in compliance with the J/80 Class Rules. All boats shall submit an Owner Regatta Declaration Form.
- 3.2 Eligible boats may enter by completing the Entry Form and submitting the required documentation via the online entry website ([www.yachtscore.com](http://www.yachtscore.com)) and paying the required fees.
- 3.3 Entries will not be accepted after 1900 September 3, 2014.
- 3.4 To qualify as a competitor an entrant shall complete the registration and measurement process by 1800 on September 11, 2014. Crew weighing must be completed before racing.

**4 CLASSIFICATION** - ISAF Regulation 22, Sailor Classification Code will apply as required by CR C.3.3.

### 5 FEES

- 5.1 The entry fee is as follows:
  - (a) US\$ 300 for entries received by 2400 August 27, 2014.
  - (b) US\$ 400 for entries received after 2400 August 27, 2014 and before 1900 September 3, 2014.
  - (c) The entry is payable in full by 1900 September 3, 2014 and is non-refundable after 3 September, 2014.
- 5.2 Other fees: The entry fee includes invitations to all social events for the Owner/Charterer and up to three crew. Social packages for additional crew and/or guests will be available for purchase online and at registration.
- 5.3 For out of town boats, rafting will be available at AYC docks at no charge.

## 6 SCHEDULE

- 6.1 Registration and crew weighing will be on Wednesday/Thursday, September 10/11, 2014 from 1000 to 1800 at the Annapolis Yacht Club Junior Fleet Building. Late weigh in will be available by appointment from 0830 to 0900 on race days.
- 6.2 Boat measurement and inspection will be available by appointment on Wednesday/Thursday, September 10/11, 2014 from 1000 to 1800.
- 6.3 Racing is scheduled to begin on Friday, September 12, 2014 and continue through Sunday, September 14, 2014. Scheduled time of the first warning signal for each day is 1100.
- 6.4 A total of 8 races are scheduled to be sailed. No race will be started after 1400 on Sunday, September 14, 2014.

## 7 MEASUREMENTS and INSPECTION

- 7.1 To complete the registration process, all boats must register for a measurement time and all boats and sails shall be inspected during the event measurement and inspection period.
- 7.2 All sails to be used during the event are subject to fundamental measurement. Measurement may take place during the event measurement and inspection period or at another 2014 J/80 Worlds measurement opportunity. See NoR 7.8.
- 7.3 All boats shall be measured (including weighing) during the event measurement and inspection period or at another 2014 J/80 Worlds measurement opportunity. See NoR 7.8.
- 7.4 Measurement or equipment inspections may be conducted before or after any race.
- 7.5 Changes or substitution of sails listed as those intended to be used in the regatta (including sails that are lost, damaged beyond repair or destroyed) may only be made with the written consent of the race committee.
- 7.6 Changes to the crew list submitted at registration may only be made with the written consent of the race committee. Copies of crew lists for all boats will be available for inspection during crew weigh-in. Changes to crew lists will be posted on the official notice board.
- 7.7 Bow numbers will be assigned by the race committee and given to each participating boat at registration. They shall be affixed to the hull according to the instructions provided by the OA.
- 7.8 Official 2014 J/80 Worlds measurement opportunities will be scheduled close to the following events: Annapolis NOOD Regatta and EYC One Design Regatta. Other measurement opportunities may be held. All opportunities will be on the 2014 J/80 North American Championship website.

**8 SAILING INSTRUCTIONS** - The Sailing Instructions will be available at registration and will be published online at [www.yachtscore.com](http://www.yachtscore.com).

**9 VENUE** - Attachment A shows the location of the club and the racing area in the Chesapeake Bay near the mouth of the Severn River.

**10 THE COURSES** - The courses to be sailed will be windward - leeward.

**11 PENALTY SYSTEM** - The first two sentences of rule 44.1 will be changed to: "A boat may take a One-Turn Penalty when she may have broken a rule of Part 2 or rule 31 while *racing*. However, when she may have broken a rule of Part 2 while in the zone around a mark other than a starting mark, her penalty shall be a Two-Turns Penalty."

## 12 SCORING

- 12.1 The Low Point System, RRS Appendix A will apply, except that each boat's series score will be the total of her race scores. No scores will be excluded.
- 12.2 Eight races are scheduled. Three completed races are required to constitute a championship.

### **13 SUPPORT BOATS**

- 13.1 Boats shall not receive a tow to the starting area except from other competing boats.
- 13.2 Rule 41 and the preamble to Part 4 of the racing rules will be modified to prohibit any outside assistance from the time a boat leaves her mooring and/or dock-slip for the first race of the day until she concludes racing for the day, except from other competitors, organizing authority boats, and registered support boats as permitted in NoR 13.3.
- 13.3 When not racing, boats may confer with their registered support boats in person without the use of electronic communications.
- 13.4 Support boats shall be registered with the OA and abide by support boat instructions as stated in the sailing instructions.
- 13.5 All support boats shall have an operating VHF radio capable of transmitting and receiving on VHF Channel 72, and agree to assist the Race Committee if directed to do so.
- 13.6 Support boats may be required to display identifying flags to be provided by the OA. Refundable deposits may be required for the flags.
- 13.7 Berths for support boats will not be provided.

**14 BERTHING** - Boats shall be kept in their assigned places.

### **15 HAUL-OUT RESTRICTIONS**

- 15.1 Except in an emergency, boats shall not be hauled out during the regatta except with and according to the terms of prior written permission of the race committee.
- 15.2 All boats shall be in the water by 1800 on Thursday, September 11, 2014 and shall remain in the water through the end of the regatta, subject to the provisions of NoR 15.1.

**16 DIVING EQUIPMENT AND PLASTIC POOLS** - From 1800 on Thursday, September 11, 2014 until the end of the regatta, underwater breathing apparatus and plastic pools or their equivalent shall not be used around boats that are sailing in the event.

### **17 RADIO COMMUNICATION**

- 17.1 Except in an emergency, a boat shall neither make radio transmissions while racing nor receive radio communications not available to all boats. This restriction also applies to mobile telephones.
- 17.2 The race committee intends to use VHF Channel 72 to broadcast courtesy information to competitors, including OCS hails after starts. All boats must carry VHF radios capable of transmitting and receiving on US channels 9, 13, 16, 69, 71, 72, 73 and 78.

**18 PRIZES** - Prizes will be given to the overall 1<sup>st</sup> through 3<sup>rd</sup> place finishers. Additional prizes may be awarded.

**19 DISCLAIMER OF LIABILITY** - Competitors participate in the regatta entirely at their own risk. See RRS 4, Decision to Race. The organizing authority will not accept any liability for material damage or personal injury or death sustained in conjunction with or prior to, during, or after the regatta. Each person racing on board a boat entered in the regatta shall sign a waiver for loss, damage or injury to their person or property in conjunction with the regatta or while on the premises of the Annapolis Yacht Club. The Annapolis Yacht Club, the J/80 Class Association, J/80 Fleet 10, and their members, volunteers, employees, officers and agents shall not be responsible for any loss, damage or injury that may occur to person(s) or property whether ashore or at sea as a consequence of the participation of any boat.

**20 INSURANCE** - Each participating boat shall be insured with valid third-party liability insurance with a minimum coverage of US\$100,000 per event or the equivalent.

### **21 FURTHER INFORMATION**

For further information please contact:

Event Chairs:

Bert Carp: phone: 202.271.8164; email: [bwcarp1@gmail.com](mailto:bwcarp1@gmail.com)

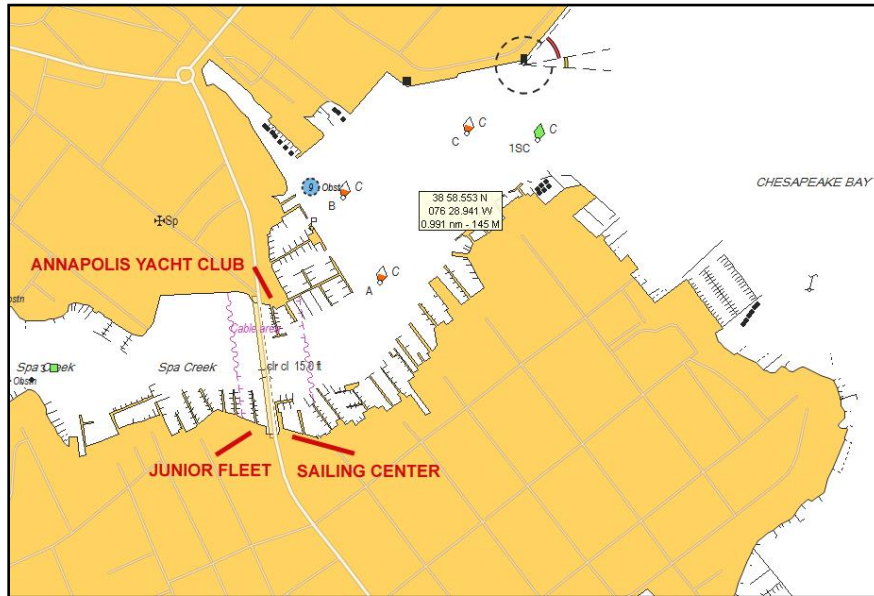
John White: phone: 410.757.4819; email: [john@whitehallannapolis.com](mailto:john@whitehallannapolis.com)

Annapolis YC

Linda Ambrose: phone: 410-858-4964; email: [lambrose@annapolisyc.com](mailto:lambrose@annapolisyc.com)

# Attachment A

## Harbor



## Racing Area

